

BÔVELL

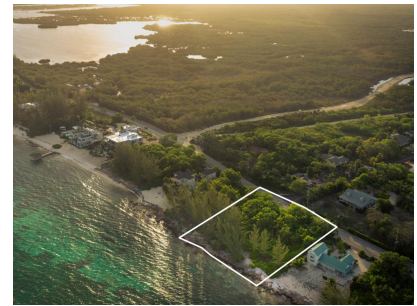


FOR SALE

USD\$1,800,000

Current

Pease Bay Beachfront Development Parcels



Rare, large 0.97 acre parcel with over 200 feet of ocean frontage in lovely neighborhood of Pease Bay.

Location: Breakers

MLS: 413207



Contact James

james.bovell@bovell.ky

+1 (345) 945 4000

BÔVELL



2024 © RE/MAX Cayman Islands. All rights reserved. Proud member of CIREBA.

RE/MAX
CAYMAN ISLANDS

Each office is independently owned and operated. Member of CIREBA and MLS.

BÔVELL



FOR SALE

USD\$1,800,000

Current

Pease Bay Beachfront Development Parcels



BÔVELL



2024 © RE/MAX Cayman Islands. All rights reserved. Proud member of CIREBA.

RE/MAX
CAYMAN ISLANDS

Each office is independently owned and operated. Member of CIREBA and NMLS

The information contained herein has been furnished by the owner(s) and/or their nominee and represented by them to be accurate. RE/MAX Cayman Islands, its agents and employees disclaim any liability or responsibility for any inaccuracies, errors, or omissions in the represented information. All the information contained herein is subject to errors, omissions, price changes, prior sale, or withdrawal, without notice and is at all times subject to verification by the purchaser(s).

BÔVELL



FOR SALE

USD\$1,800,000

Current

Pease Bay Beachfront Development Parcels

ADDITIONAL INFORMATION

Aprx Water Frontage	201	Title	Pease Bay Beachfront Development Parcels	Land Certificate	Not Issued
---------------------	-----	-------	--	------------------	------------

RUNNING COSTS

Sewage in Maintenance Costs	No	AC in Maintenance Costs	No	Gardening in Maintenance Costs	No
TV in Maintenance Costs	No	Insurance Included in Maintenance	No	Pest in Maintenance Costs	No

BÔVELL



2024 © RE/MAX Cayman Islands. All rights reserved. Proud member of CIREBA.

RE/MAX
CAYMAN ISLANDS

Each office is independently owned and operated. Member of CIREBA and NMLS.