

BÔVELL

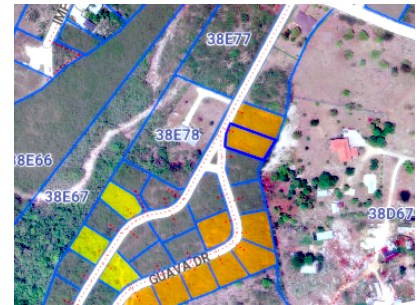
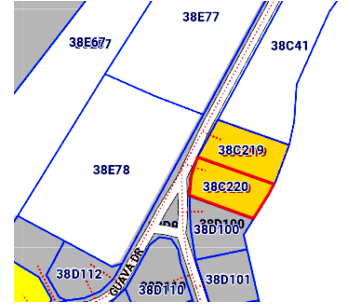


FOR SALE

KYD\$210,000

Current

# GUAVA GROVES - HOUSE LOT 220



Excellent location and easy access to Countryside Shipping Center, Bodden Town public beach, and School. This property is filled and ready for your dream home or your next investment project.

Location: Savannah / Lower Valley

MLS: 415016



Contact James  
james.bovell@bovell.ky  
+1 (345) 945 4000

BÔVELL



2024 © RE/MAX Cayman Islands. All rights reserved. Proud member of CIREBA.

RE/MAX  
CAYMAN ISLANDS

Each office is independently owned and operated. Member of CIREBA and MLS.

BÔVELL

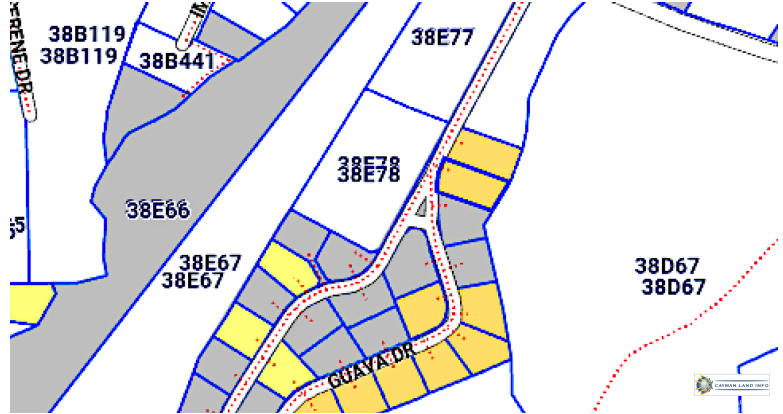
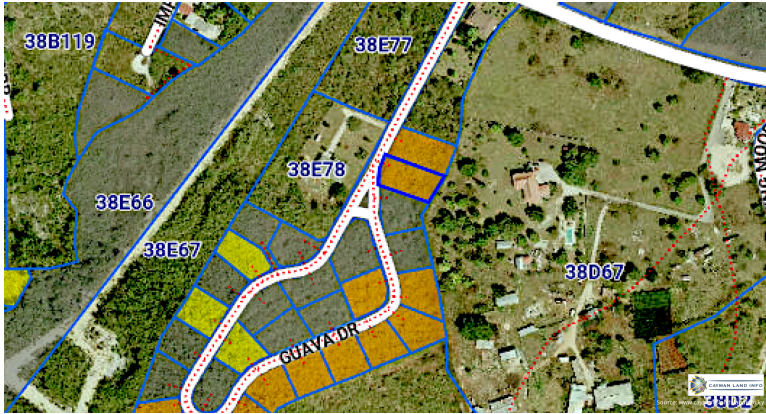


FOR SALE

KYD\$210,000

Current

# GUAVA GROVES - HOUSE LOT 220



BÔVELL



2024 © RE/MAX Cayman Islands. All rights reserved. Proud member of CIREBA.

RE/MAX  
CAYMAN ISLANDS

Each office is independently owned and operated. Member of CIREBA and NMLS

The information contained herein has been furnished by the owner(s) and/or their nominee and represented by them to be accurate. RE/MAX Cayman Islands, its agents and employees disclaim any liability or responsibility for any inaccuracies, errors, or omissions in the represented information. All the information contained herein is subject to errors, omissions, price changes, prior sale, or withdrawal, without notice and is at all times subject to verification by the purchaser(s).

BÔVELL



FOR SALE

KYD\$210,000

Current

# GUAVA GROVES - HOUSE LOT 220

## ADDITIONAL INFORMATION

Title GUAVA GROVES - HOUSE LOT 220

## RUNNING COSTS

Sewage in Maintenance Costs	No	AC in Maintenance Costs	No	Gardening in Maintenance Costs	No
TV in Maintenance Costs	No	Insurance Included in Maintenance	No	Pest in Maintenance Costs	No

BÔVELL



2024 © RE/MAX Cayman Islands. All rights reserved. Proud member of CIREBA.

RE/MAX  
CAYMAN ISLANDS

Each office is independently owned and operated. Member of CIREBA and NMLS.