

BÔVELL

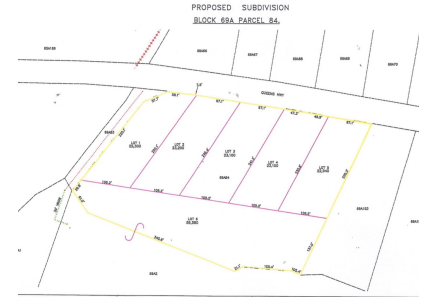


FOR SALE

KYD\$130,000

Pending/Conditional

# Queen's Highway Subdivision Lot #3



Perfect location to build a spacious home or cottage for those weekend getaways that you and your family will enjoy for many years to come. Let the soothing breeze and tranquility of East End captivate you.

Location: East End

MLS: 416868



Contact James  
james.bovell@bovell.ky  
+1 (345) 945 4000

BÔVELL



2024 © RE/MAX Cayman Islands. All rights reserved. Proud member of CIREBA.

RE/MAX  
CAYMAN ISLANDS

Each office is independently owned and operated. Member of CIREBA and NARS.

BÔVELL



FOR SALE

KYD\$130,000

Pending/Conditional

# Queen's Highway Subdivision Lot #3

## ADDITIONAL INFORMATION

Title	Queen's Highway Subdivision Lot #3	Class	Existing	Land Certificate	Not Issued
-------	---------------------------------------	-------	----------	------------------	------------

## RUNNING COSTS

Sewage in Maintenance Costs	No	AC in Maintenance Costs	No	Gardening in Maintenance Costs	No
TV in Maintenance Costs	No	Insurance Included in Maintenance	No	Pest in Maintenance Costs	No

BÔVELL



2024 © RE/MAX Cayman Islands. All rights reserved. Proud member of CIREBA.

RE/MAX  
CAYMAN ISLANDS

Each office is independently owned and operated. Member of CIREBA and NMLS.