

BÔVELL

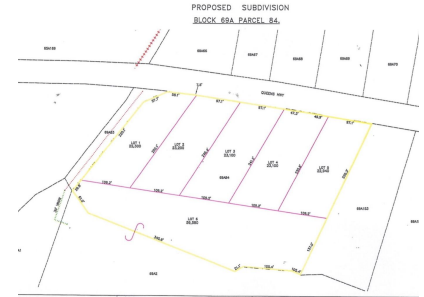


FOR SALE

KYD\$130,000

Pending/Conditional

Queen's Highway Subdivision Lot #4



Perfect location to build a spacious home or cottage for those weekend getaways that you and your family will enjoy for many years to come. Let the soothing breeze and tranquility of East End captivate you.

Location: East End
MLS: 416869



Contact James
james.bovell@bovell.ky
+1 (345) 945 4000

BÔVELL



2024 © RE/MAX Cayman Islands. All rights reserved. Proud member of CIREBA.

RE/MAX
CAYMAN ISLANDS

Each office is independently owned and operated. Member of CIREBA and NARS.

BÔVELL



FOR SALE

KYD\$130,000

Pending/Conditional

Queen's Highway Subdivision Lot #4

ADDITIONAL INFORMATION

| | | | | | |
|-------|---------------------------------------|-------|----------|------------------|------------|
| Title | Queen's Highway Subdivision Lot #4 | Class | Existing | Land Certificate | Not Issued |
|-------|---------------------------------------|-------|----------|------------------|------------|

RUNNING COSTS

| | | | | | |
|-----------------------------------|----|---|----|--------------------------------------|----|
| Sewage in Maintenance Costs | No | AC in Maintenance Costs | No | Gardening in Maintenance Costs | No |
| TV in Maintenance Costs | No | Insurance Included in Maintenance | No | Pest in Maintenance Costs | No |

BÔVELL



2024 © RE/MAX Cayman Islands. All rights reserved. Proud member of CIREBA.

RE/MAX
CAYMAN ISLANDS

Each office is independently owned and operated. Member of CIREBA and NMLS.