

BÔVELL



FOR SALE

USD\$850,000

Current

Kaibo Phase 2, Upgraded Ground Floor Corner Condo w/storage unit



Rare ground floor corner condo located in Phase 2 Kaibo Yacht club Villas, B building. Incredible rental property, right next to Kaibo Restaurant.

Location: Rum Point

MLS: 417535

Built: 2005



Contact James

james.bovell@bovell.ky

+1 (345) 945 4000

BÔVELL



2024 © RE/MAX Cayman Islands. All rights reserved. Proud member of CIREBA.

RE/MAX
CAYMAN ISLANDS

Each office is independently owned and operated. Member of CIREBA and MLS.

BÔVELL

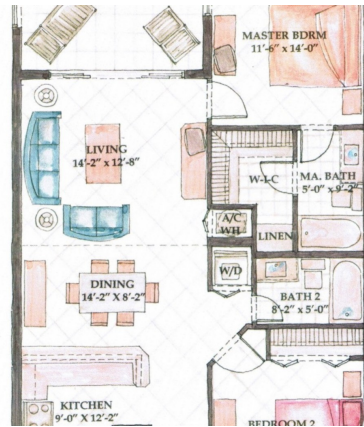


FOR SALE

USD\$850,000

Current

Kaibo Phase 2, Upgraded Ground Floor Corner Condo w/storage unit



BÔVELL



2024 © RE/MAX Cayman Islands. All rights reserved. Proud member of CIREBA.

RE/MAX CAYMAN ISLANDS

Each office is independently owned and operated. Member of CIREBA and NMLS.

The information contained herein has been furnished by the owner(s) and/or their nominee and represented by them to be accurate. RE/MAX Cayman Islands, its agents and employees disclaim any liability or responsibility for any inaccuracies, errors, or omissions in the represented information. All the information contained herein is subject to errors, omissions, price changes, prior sale, or withdrawal, without notice and is at all times subject to verification by the purchaser(s).



Kaibo Phase 2, Upgraded Ground Floor Corner Condo w/storage unit

- BBQ
- Central AC
- Dishwasher
- Hurricane Shutters
- Living Room
- Patio
- Refrigerator
- Stories: 1
- Washer/Dryer: Yes
- Breakfast
- City Water
- Furnished: Yes
- Kitchen
- Microwave
- Pool
- Septic
- Storm Windows
- Water Frontage
- Cable/Sat TV
- Dining Area
- Garage: 1
- Kitchen area
- Oven: Electric
- Porch: Screened
- Smart Home Monitoring
- Stove: Electric

ADDITIONAL INFORMATION

Aprx Water Frontage	300	Furnished	Yes	Title	Kaibo Phase 2, Upgraded Ground Floor Corner Condo w/storage unit
Class	Existing	Total # of Units	30	Construction	Concrete
Land Certificate	Not Issued	Water Frontage	Yes	Floor Level	1
Stories	1	Foundation	Slab	Strata #	433

RUNNING COSTS

Monthly Insurance	CI\$700	Monthly Maintenance Costs	CI\$552.61	TV Costs	CI\$129
Sewage in Maintenance Costs	Yes	AC in Maintenance Costs	Yes	Gardening in Maintenance Costs	Yes
TV in Maintenance Costs	Yes	Insurance Included in Maintenance	Yes	Pest in Maintenance Costs	Yes

