

BÔVELL

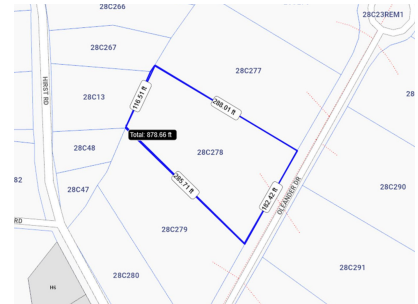
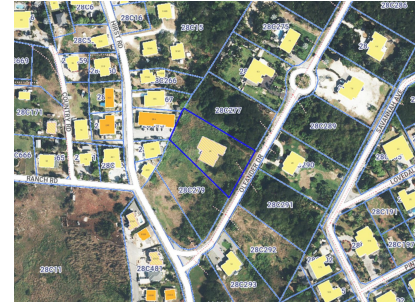


FOR SALE

KYD\$750,000

Current

Savannah, Oleander Estates 0.9821 acre Parcel



Oleander Estates/Drive subdivision is located off Hirst Road in Newlands and offers 0.9821 acres with restrictive agreements in place.

Location: Savannah

MLS: 417887



Contact James

james.bovell@bovell.ky

+1 (345) 945 4000

BÔVELL



2024 © RE/MAX Cayman Islands. All rights reserved. Proud member of CIREBA.

RE/MAX CAYMAN ISLANDS

Each office is independently owned and operated. Member of CIREBA and NARS.

BÔVELL



FOR SALE

KYD\$750,000

Current

Savannah, Oleander Estates 0.9821 acre Parcel



BÔVELL



2024 © RE/MAX Cayman Islands. All rights reserved. Proud member of CIREBA.

RE/MAX
CAYMAN ISLANDS

Each office is independently owned and operated. Member of CIREBA and NMLS.

The information contained herein has been furnished by the owner(s) and/or their nominee and represented by them to be accurate. RE/MAX Cayman Islands, its agents and employees disclaim any liability or responsibility for any inaccuracies, errors, or omissions in the represented information. All the information contained herein is subject to errors, omissions, price changes, prior sale, or withdrawal, without notice and is at all times subject to verification by the purchaser(s).

BÔVELL



FOR SALE

KYD\$750,000

Current

Savannah, Oleander Estates 0.9821 acre Parcel

ADDITIONAL INFORMATION

Title

Savannah, Oleander Estates 0.9821 acre Parcel

RUNNING COSTS

Sewage in Maintenance Costs No

AC in Maintenance Costs No

Gardening in Maintenance Costs No

TV in Maintenance Costs No

Insurance Included in Maintenance No

Pest in Maintenance Costs No

BÔVELL



2024 © RE/MAX Cayman Islands. All rights reserved. Proud member of CIREBA.

RE/MAX
CAYMAN ISLANDS

Each office is independently owned and operated. Member of CIREBA and NMLS.