

BÔVELL



FOR SALE

KYD\$3,600,000

Current

Dockside Commercial - Best Location in GT!!!



ABSOLUTELY PRIME LOCATION, this retail space plus parking area is gold! Huge high traffic zone with cruise ship customers, local traffic and right on the edge of George Town Centre. Ample parking make this an incredibly valuable property.

Location: George Town

MLS: 418121

Built: 2000



Contact James

james.bovell@bovell.ky

+1 (345) 945 4000

BÔVELL



2024 © RE/MAX Cayman Islands. All rights reserved. Proud member of CIREBA.

RE/MAX CAYMAN ISLANDS

Each office is independently owned and operated. Member of CIREBA and MLS.

BÔVELL

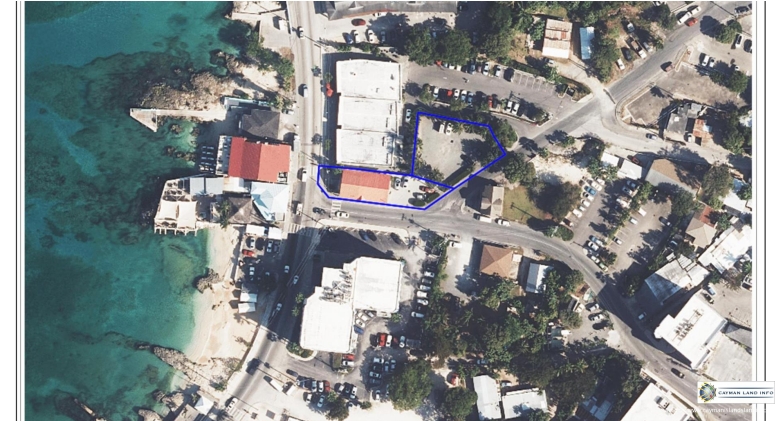


FOR SALE

KYD\$3,600,000

Current

Dockside Commercial - Best Location in GT!!!



BÔVELL



2024 © RE/MAX Cayman Islands. All rights reserved. Proud member of CIREBA.

RE/MAX
CAYMAN ISLANDS

Each office is independently owned and operated. Member of CIREBA and NARS.

The information contained herein has been furnished by the owner(s) and/or their nominee and represented by them to be accurate. RE/MAX Cayman Islands, its agents and employees disclaim any liability or responsibility for any inaccuracies, errors, or omissions in the represented information. All the information contained herein is subject to errors, omissions, price changes, prior sale, or withdrawal, without notice and is at all times subject to verification by the purchaser(s).

BÔVELL



FOR SALE

KYD\$3,600,000

Current

Dockside Commercial - Best Location in GT!!!

- Central AC
- Patio

- City Water
- Septic

- Hurricane Shutters
- Stories: 1

ADDITIONAL INFORMATION

Title	Dockside Commercial - Best Location in GT!!!	Class	Existing	Construction	Block
Land Certificate	Issued	Stories	1	Foundation	Slab

RUNNING COSTS

Sewage in Maintenance Costs	No	AC in Maintenance Costs	No	Gardening in Maintenance Costs	No
TV in Maintenance Costs	No	Insurance Included in Maintenance	No	Pest in Maintenance Costs	No

BÔVELL



2024 © RE/MAX Cayman Islands. All rights reserved. Proud member of CIREBA.

RE/MAX
CAYMAN ISLANDS

Each office is independently owned and operated. Member of CIREBA and NMLS