

# BÔVELL

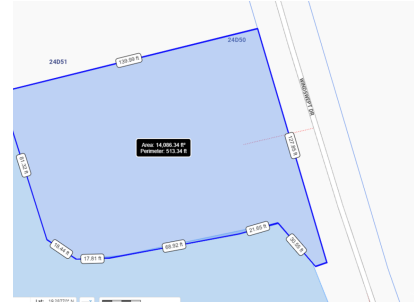


# FOR SALE

## KYD\$479,000

Current

## PATRICK ISLAND | WINDSWEPT DR CANALFRONT LOT



This rare parcel has it all – size, location, expansive views & water frontage to two sides! Located in the prominent and established gated community of Patrick’s Island, a Boater’s Paradise. This 0.

Location: Spotts  
MLS: 418288



Contact James  
james.bovell@bovell.ky  
+1 (345) 945 4000

# BÔVELL



2024 © RE/MAX Cayman Islands. All rights reserved. Proud member of CIREBA.

## RE/MAX CAYMAN ISLANDS

Each office is independently owned and operated. Member of CIREBA and MLS.

BÔVELL



FOR SALE

KYD\$479,000

Current

# PATRICK ISLAND | WINDSWEPT DR CANALFRONT LOT



2024 © RE/MAX Cayman Islands. All rights reserved. Proud member of CIREBA.

Each office is independently owned and operated. Member of CIREBA and NMLS.

The information contained herein has been furnished by the owner(s) and/or their nominee and represented by them to be accurate. RE/MAX Cayman Islands, its agents and employees disclaim any liability or responsibility for any inaccuracies, errors, or omissions in the represented information. All the information contained herein is subject to errors, omissions, price changes, prior sale, or withdrawal, without notice and is at all times subject to verification by the purchaser(s).

BÔVELL



FOR SALE

KYD\$479,000

Current

# PATRICK ISLAND | WINDSWEPT DR CANALFRONT LOT

● Water Frontage

## ADDITIONAL INFORMATION

Aprx Water Frontage	239	Title	PATRICK ISLAND   WINDSWEPT DR CANALFRONT LOT	Land Certificate	Not Issued
Water Frontage	Yes				

## RUNNING COSTS

Sewage in Maintenance Costs	No	AC in Maintenance Costs	No	Gardening in Maintenance Costs	No
TV in Maintenance Costs	No	Insurance Included in Maintenance	No	Pest in Maintenance Costs	No

BÔVELL



RE/MAX  
CAYMAN ISLANDS

Each office is independently owned and operated. Member of CIREBA and NMLS.

2024 © RE/MAX Cayman Islands. All rights reserved. Proud member of CIREBA.