

BÔVELL



FOR SALE

KYD\$525,000

Current

# Melrose Landing 2 Bed End-Unit



Melrose Landing #13 is a 1,870 sq ft, 2-bed, 2.5-bath end-unit townhome that is spacious and inviting, and stands out with its impeccable upkeep and thoughtful layout.

Location: Spotts

MLS: 418410

Built: 2006



Contact James

[james.bovell@bovell.ky](mailto:james.bovell@bovell.ky)

+1 (345) 945 4000

BÔVELL



2024 © RE/MAX Cayman Islands. All rights reserved. Proud member of CIREBA.

RE/MAX  
CAYMAN ISLANDS

Each office is independently owned and operated. Member of CIREBA and MLS.



BÔVELL

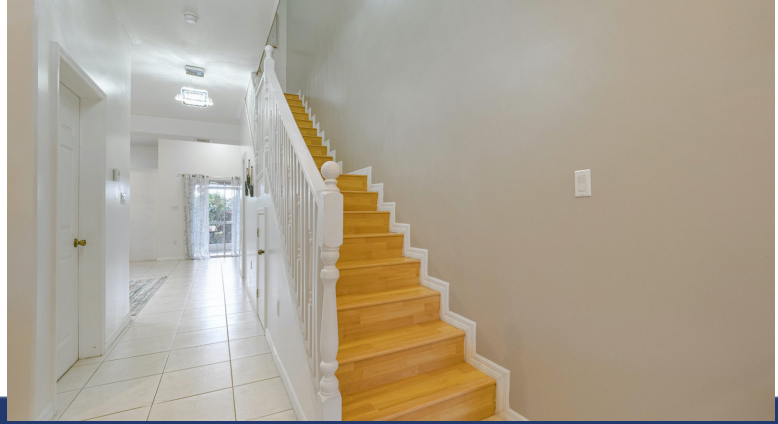


FOR SALE

KYD\$525,000

Current

# Melrose Landing 2 Bed End-Unit



BÔVELL



2024 © RE/MAX Cayman Islands. All rights reserved. Proud member of CIREBA.

RE/MAX  
CAYMAN ISLANDS

Each office is independently owned and operated. Member of CIREBA and NMLS.

The information contained herein has been furnished by the owner(s) and/or their nominee and represented by them to be accurate. RE/MAX Cayman Islands, its agents and employees disclaim any liability or responsibility for any inaccuracies, errors, or omissions in the represented information. All the information contained herein is subject to errors, omissions, price changes, prior sale, or withdrawal, without notice and is at all times subject to verification by the purchaser(s).



# Melrose Landing 2 Bed End-Unit

- Breakfast
- Dining Area
- Hurricane Shutters
- Living Room
- Patio
- Refrigerator
- Split AC
- Washer/Dryer: Yes
- Cable/Sat TV
- Dishwasher
- Kitchen
- Microwave
- Pool
- Septic
- Stories: 2
- City Water
- Furnished: Yes
- Kitchen area
- Oven: Yes
- Porch: Screened
- Sewer
- Stove: Electric

## ADDITIONAL INFORMATION

Furnished	Yes	Title	Melrose Landing 2 Bed End-Unit	Class	Existing
Total # of Units	24	Construction	Concrete	Land Certificate	Not Issued
Stories	2	Foundation	Slab	Strata #	388

## RUNNING COSTS

Monthly Maintenance Costs	CI\$842	Sewage in Maintenance Costs	Yes	AC in Maintenance Costs	Yes
Gardening in Maintenance Costs	Yes	TV in Maintenance Costs	Yes	Insurance Included in Maintenance	Yes
Pest in Maintenance Costs	Yes				

