

BÔVELL



FOR SALE

KYD\$650,000

New

Large 1.563 Acre Development Parcel Bodden Town



Excellent 1. 563 acre parcel off Bodden Town Road.

Location: Breakers

MLS: 418807



Contact James

james.bovell@bovell.ky

+1 (345) 945 4000

BÔVELL



2024 © RE/MAX Cayman Islands. All rights reserved. Proud member of CIREBA.

RE/MAX
CAYMAN ISLANDS

Each office is independently owned and operated. Member of CIREBA and MLS.

BÔVELL

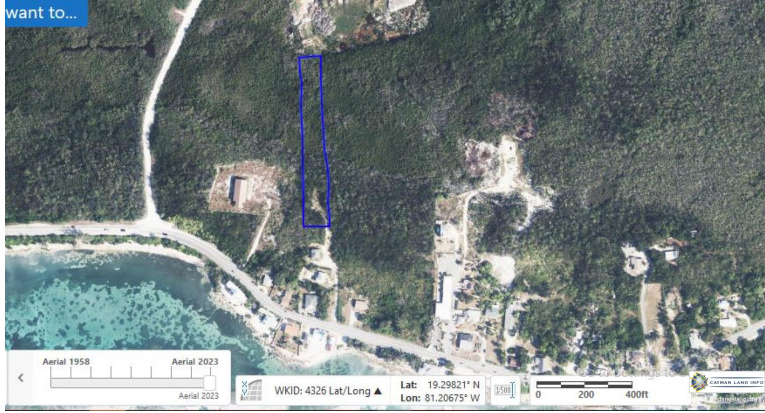


FOR SALE

KYD\$650,000

New

Large 1.563 Acre Development Parcel Bodden Town



BÔVELL



2024 © RE/MAX Cayman Islands. All rights reserved. Proud member of CIREBA.

RE/MAX
CAYMAN ISLANDS

Each office is independently owned and operated. Member of CIREBA and NMLS.

The information contained herein has been furnished by the owner(s) and/or their nominee and represented by them to be accurate. RE/MAX Cayman Islands, its agents and employees disclaim any liability or responsibility for any inaccuracies, errors, or omissions in the represented information. All the information contained herein is subject to errors, omissions, price changes, prior sale, or withdrawal, without notice and is at all times subject to verification by the purchaser(s).

BÔVELL



FOR SALE

KYD\$650,000

New

Large 1.563 Acre Development Parcel Bodden Town

ADDITIONAL INFORMATION

Title Large 1.563 Acre Development Parcel Bodden Town Land Certificate Issued

RUNNING COSTS

Sewage in Maintenance Costs	No	AC in Maintenance Costs	No	Gardening in Maintenance Costs	No
TV in Maintenance Costs	No	Insurance Included in Maintenance	No	Pest in Maintenance Costs	No

BÔVELL



2024 © RE/MAX Cayman Islands. All rights reserved. Proud member of CIREBA.

RE/MAX CAYMAN ISLANDS

Each office is independently owned and operated. Member of CIREBA and NMLS