

BÔVELL

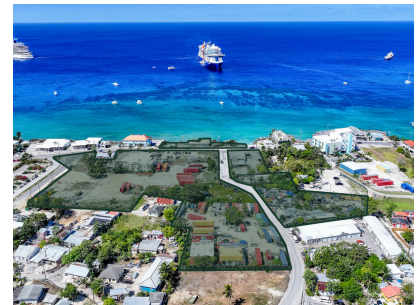


FOR SALE

USD\$29,500,000

Current

Iconic 6.8092 Acres GTC (w/ Sea Frontage and 4 Income Producing Buildings)



Absolutely incredible opportunity that very rarely comes available. This acreage located in George Town Central along North Church Street and Bodden Road spans a massive 6.

Location: George Town

MLS: 418934



Contact James

james.bovell@bovell.ky

+1 (345) 945 4000

BÔVELL



2024 © RE/MAX Cayman Islands. All rights reserved. Proud member of CIREBA.

RE/MAX
CAYMAN ISLANDS

Each office is independently owned and operated. Member of CIREBA and MLS.

BÔVELL



FOR SALE

USD\$29,500,000

Current

Iconic 6.8092 Acres GTC (w/ Sea Frontage and 4 Income Producing Buildings)



BÔVELL



2024 © RE/MAX Cayman Islands. All rights reserved. Proud member of CIREBA.

RE/MAX
CAYMAN ISLANDS

Each office is independently owned and operated. Member of CIREBA and NMLS.

The information contained herein has been furnished by the owner(s) and/or their nominee and represented by them to be accurate. RE/MAX Cayman Islands, its agents and employees disclaim any liability or responsibility for any inaccuracies, errors, or omissions in the represented information. All the information contained herein is subject to errors, omissions, price changes, prior sale, or withdrawal, without notice and is at all times subject to verification by the purchaser(s).

BÔVELL



FOR SALE

USD\$29,500,000

Current

Iconic 6.8092 Acres GTC (w/ Sea Frontage and 4 Income Producing Buildings)

● City Water

● Septic

ADDITIONAL INFORMATION

Aprx Water Frontage 270

Title Iconic 6.8092 Acres GTC (w/ Sea Frontage and 4 Income Producing Buildings) Construction Block

RUNNING COSTS

Sewage in Maintenance Costs No

AC in Maintenance Costs No

Gardening in Maintenance Costs No

TV in Maintenance Costs No

Insurance Included in Maintenance No

Pest in Maintenance Costs No

BÔVELL



2024 © RE/MAX Cayman Islands. All rights reserved. Proud member of CIREBA.

RE/MAX CAYMAN ISLANDS

Each office is independently owned and operated. Member of CIREBA and MLS.