

BÔVELL

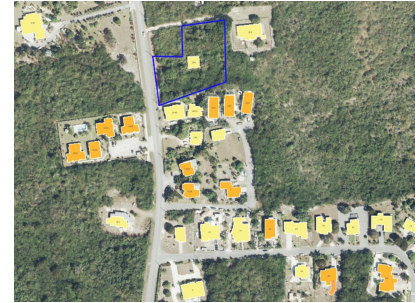


FOR SALE

KYD\$1,100,000

New

Prime 1.1 acre in West Bay



Rare and prime 1.11 acre parcel with 170ft road frontage on Capt Reginald Parsons Drive (Mount Pleasant Drive) - 7ft Above Sea Level and ready to build on.

Location: West Bay

MLS: 418956



Contact James
james.bovell@bovell.ky
+1 (345) 945 4000

BÔVELL



2024 © RE/MAX Cayman Islands. All rights reserved. Proud member of CIREBA.

RE/MAX
CAYMAN ISLANDS

Each office is independently owned and operated. Member of CIREBA and MLS.

BÔVELL



FOR SALE

KYD\$1,100,000

New

Prime 1.1 acre in West Bay

ADDITIONAL INFORMATION

Title	Prime 1.1 acre in West Bay	Class	Existing
-------	----------------------------	-------	----------

RUNNING COSTS

Sewage in Maintenance Costs	No	AC in Maintenance Costs	No	Gardening in Maintenance Costs	No
TV in Maintenance Costs	No	Insurance Included in Maintenance	No	Pest in Maintenance Costs	No

BÔVELL



2024 © RE/MAX Cayman Islands. All rights reserved. Proud member of CIREBA.

RE/MAX
CAYMAN ISLANDS

Each office is independently owned and operated. Member of CIREBA and NMLS